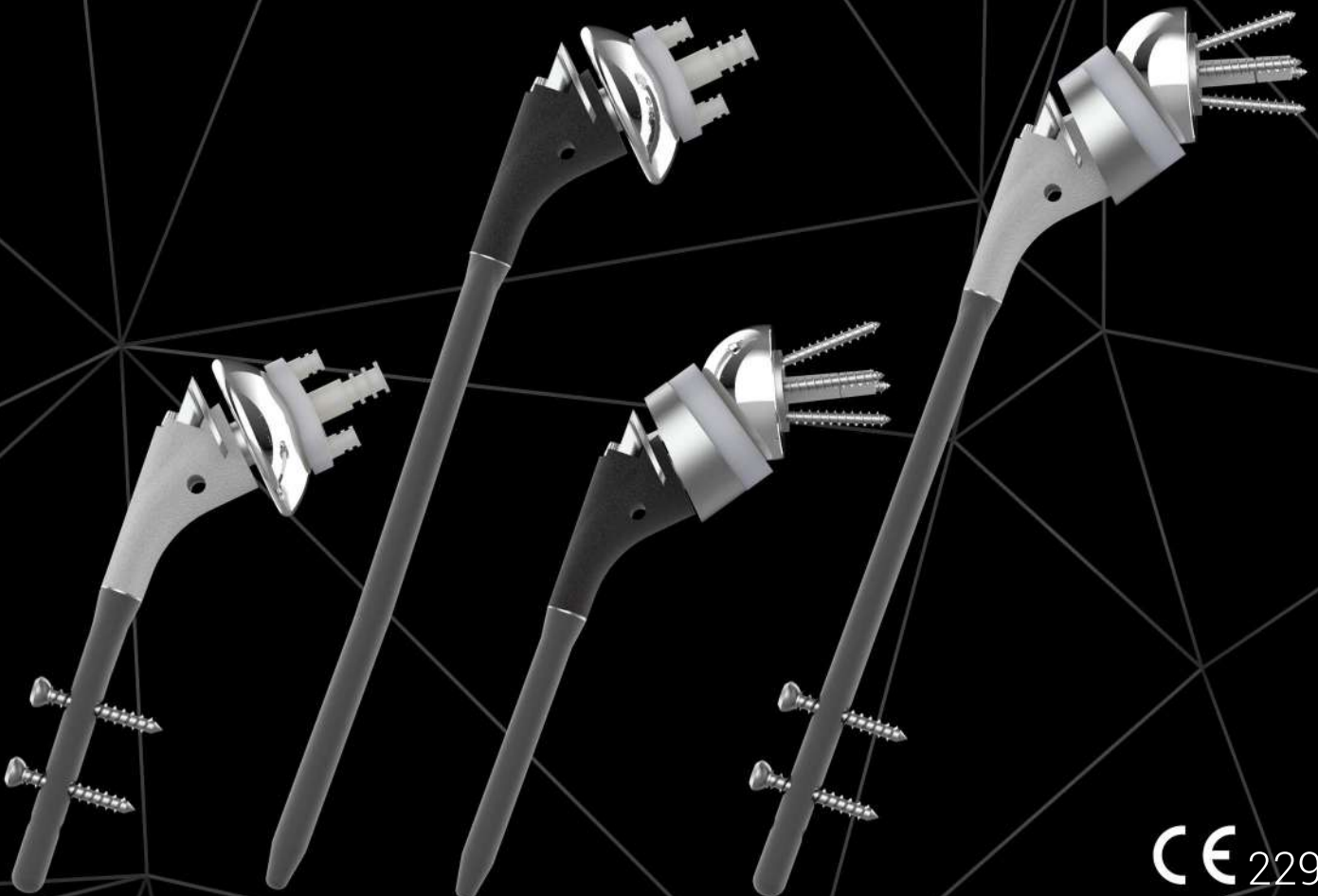




next

Shoulder Solutions[®]

Improve Life...

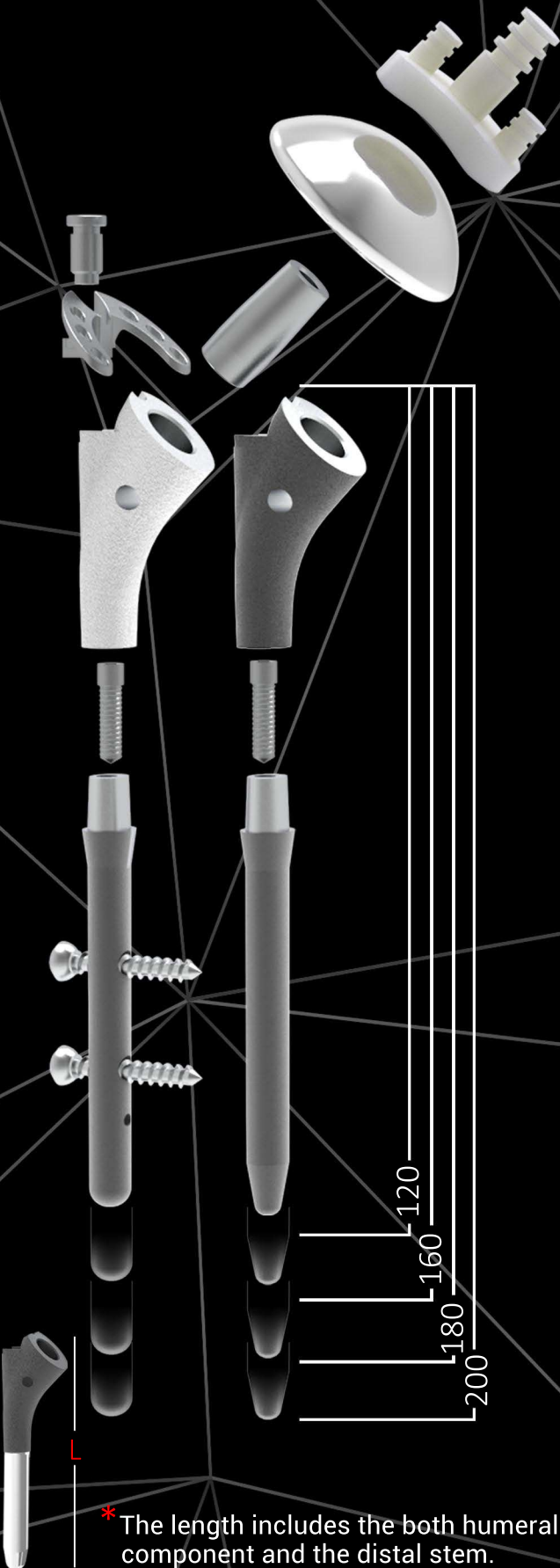


CE 2292



next
Shoulder Solutions®

Improve Life...



3/4 Peg Glenoid PE
Size: xs-s-m-l



Humeral Head Centric & Eccentric
Ø 39-43-46-50 mm



Modular Neck
Length: +0 & +3 & +5



Collar Implant & Collar Screw
6 suture holes



Humeral Component
Cemented & Cementless
Size: 10-12-14



Connection Screw
Standard size, Ø4,5mm



Humeral Stem
Cemented & Cementless
Ø 8-9-10-11-12-13-14-15
L*: 120-160-180-200



Distal Locking Screw Ø 4,5 mm
L. 18-20-22-24-26-28 mm

* The length includes the both humeral component and the distal stem.



next

Shoulder Solutions[®]

Improve Life...



Posterior Extension

L. 6mm- 10mm



Metal Glenoid Baseplate

Ø 24mm Ti+HA coated



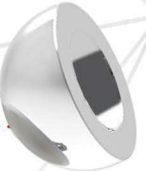
Locking-Standard Screw Ø4,5mm

L.20-25-30-35-40



Glonosphere

Centric Eccentric Ø36 & Ø40mm



Connection Screw

Cannulated L.26mm Ø6mm



Humeral Cup

UHMWPE Ø36 & Ø40mm

L. +3,+6,+9,+12,+15,+18mm



Humeral Spacer

Ø36 L.+0,+9mm 10° Angled



Collar Implant & Collar Screw

6 suture holes



Humeral Component

Cemented & Cementless

Size: 10-12-14



Connection Screw

Standard size, Ø4,5mm



Humeral Stem

Cemented & Cementless

Ø 8-9-10-11-12-13-14-15

L*: 120-160-180-200



Distal Locking Screw Ø 4,5 mm

L. 18-20-22-24-26-28 mm



* The length includes the both humeral component and the distal stem.



NEXT SAĞLIK ÜRÜNLERİ A.Ş.



www.next.tc



quality@next.tc



+90 312 242 0041



İvedik OSB 88 Oto Sanayi Sitesi 3.Bölge 2284 Cad. No:101 Yenimahalle / ANKARA / TURKEY